



SUSTAINABILITY APPLICATION SUPPORTS

JUNE 2024

WWW.SASC.SA

AGENDA



INTRODUCTION	3
OUR VALUES	5
DELIVERABLES	6
PROJECTS AND GALLERY	7
PRACTICAL FACTS	37
GOALS	38
CONTACT US	39



JUNE 2024

SAS CONSTRUCTION ESTABLISHMENT

SUSTAINABILITY APPLICATION SUPPORTS
مؤسسة دعائم تطبيق الإستدامة





ABOUT



**SUSTAINABILTY
APPLICATIONS
SUPPORTS
GENERAL
CONTRACTING
ESTABLISHMENT**

SPECIALIZED IN CONCRETE SKELTON AND FINISHING WORKS AS MAIN ACTIVITIES. WE PARTICIPATED IN SEVERAL MAJOR PROJECTS AND SUCCEEDED IN MEET MISSIONS REQUIREMENTS AND CUSTOMERS SATISFACTION. THUS HELPED SAS TO IMPROVE THE PROFESSIONALISM AND TO **ACQUIRE RELAIBLE REPUTATIN IN CONSTRUCTION DOMAIN AMONG KSA.**

OUR VALUES



COOPARTION
WE WORK AS A
TEAM MEMBER IN
EACH PROJECT.

CUSTOMER SATISFACTION

WE CONSIDER THEM AS PARTENERS
AND OUR STRATIGY IS BUILDING
LONG TERM RELATIONS

INNOVATION

WE ARE DEVELOPING A
DESIGN DEPARTMENT
SPECIALIZED IN ECO-
FRIENDLY CONTRUCTION
APPLICATIONS

DELIVERABLES



**WORKMANSHIP
FOR CONCRETE** 01

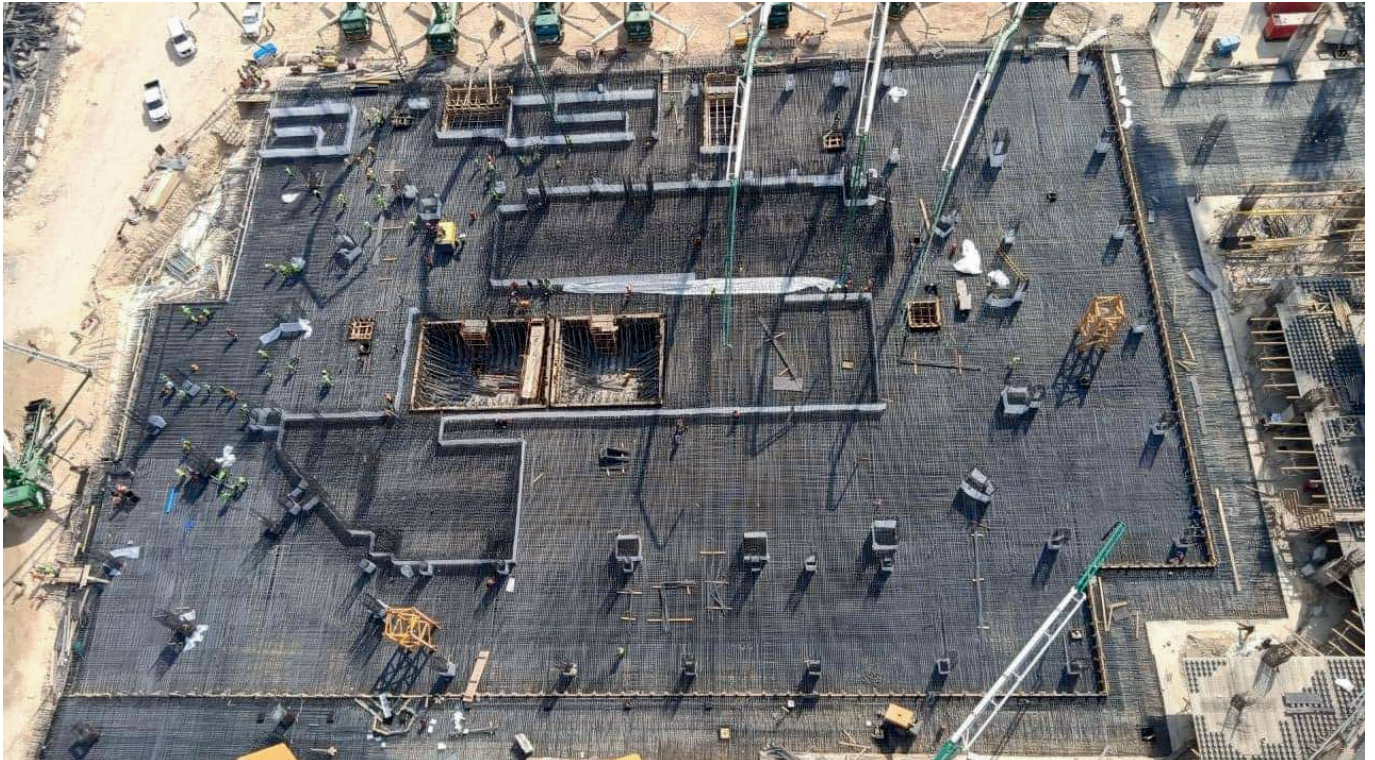
**WORKMANSHIP
FOR FINISHING** 02

TURN KEY 03

**SMALL GOVERNMENT
PROJECT** 04

SURVYING JOBS 05

**TECHNICAL
SUPPORT** 06



PROJECTS OVERVIEW



LAST 2 YEARS

WE WORKED AS WORKMANSHIP SUB-
CONTRACTOR



CROWN PLAZA SKELTON

PROJET NAME	CROWN PLAZA HOTEL - RIYADH
THE OWNER	TAIBAH INVESMENT.
MAIN CONTRACTOR	ALSAAD CONTRACTING COMPANY
WE WORKED AS	WORKMANSHIP FOR CONCRETE SKELTON
CONTRACT VALUE	9,280,000 SAR
PROJECT DURATION	14 MONTHS FROM JUNE 22 TO AUG 23
PROJECT DESCRIPTION	16 SORIES TOWER WITH 2 BASEMENTS (54000M2)



CROWN PLAZA SKELTON

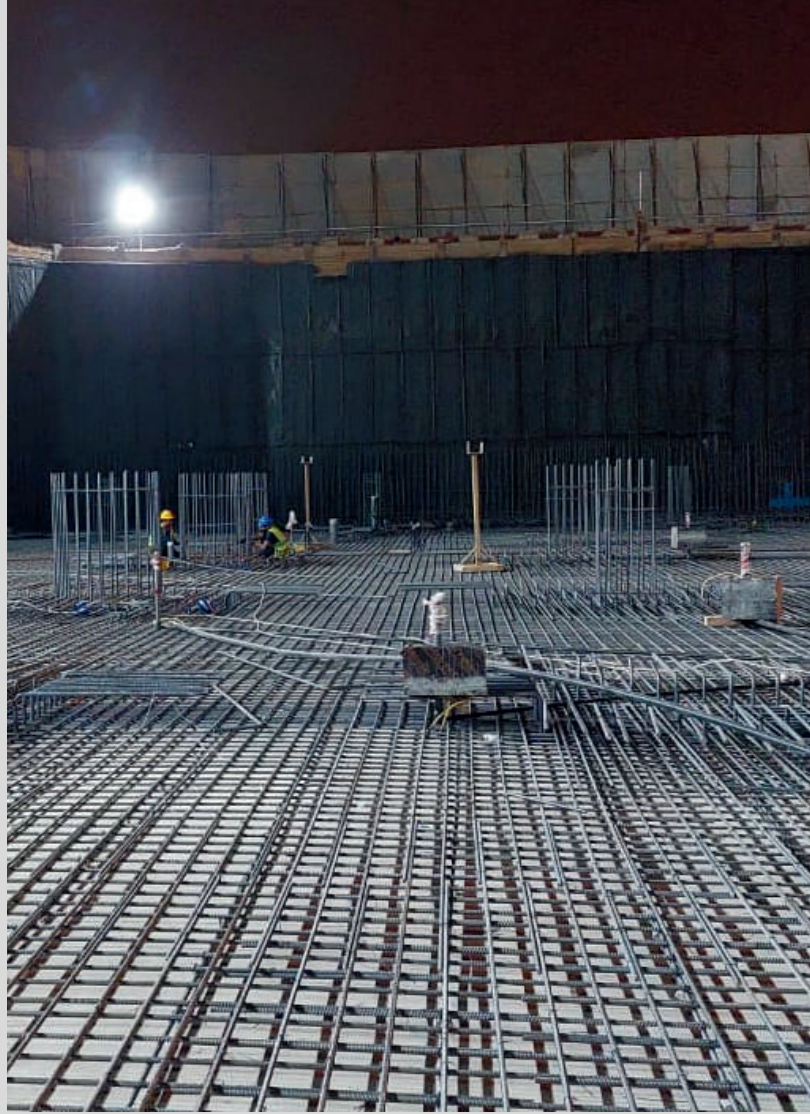
PROJET NAME	CROWN PLAZA HOTEL - RIYADH
THE OWNER	TAIBAH INVESMENT.
MAIN CONTRACTO R	ALSAAD CONTRACTING COMPANY
WE WORKED AS	WORKMANSHIP FOR CONCRETE SKELTON
CONTRACT VALUE	9,280,000 SAR
PROJECT DURATION	14 MONTHS FROM JUNE 22 TO AUG 23
PROJECT DESCRIPTIO N	16 SORIES TOWER WITH 2 BASEMENTS (54000M2)



ORGANIZATION CHART

PROJECT MANAGEWR	ENG. JALAL ABDULAZIZ
PROJECT ENINEER	ENG. OMER JEHAD
NIGHT SHIFT	ENG. HOSSAM AHMED
SUPERVISOR	SHOAB REHMAN
STEEL DAY	F. JOWEL (32 STEEL FIXERS)
FORMWORK DAY	F. SADIQ (45 CARPENTERS)
CONCRETE AND LOGISTIC	F. RASHID (28 MASONS AND 18 LABORS)
STEEL NIGHT	F. HAROON (55 STEEL FIXERS)
FORMWORK NIGHT	F. SHOBIIR (26 CARPENTERS)











CROWN PLAZA FINISHIG

PROJET NAME	CROWN PLAZA HOTEL - RIYADH
THE OWNER	TAIBA INVESTMENT
MAIN CONTRACTOR	ALSAAD CONTRACTING COMPANY
WE ARE WORKING AS	FINISHING WRK (GYPSUM BOARD, PAINT, TILES, SCREED)
CONTRACT VALUE	NOT APPLICABLE
PROJECT DURATION	STARTED IN JAN 24
PROJECT DESCRIPTION	16 SORIES TOWER WITH 2 BASEMENTS (54000M2)

ORGANIZATION CHART

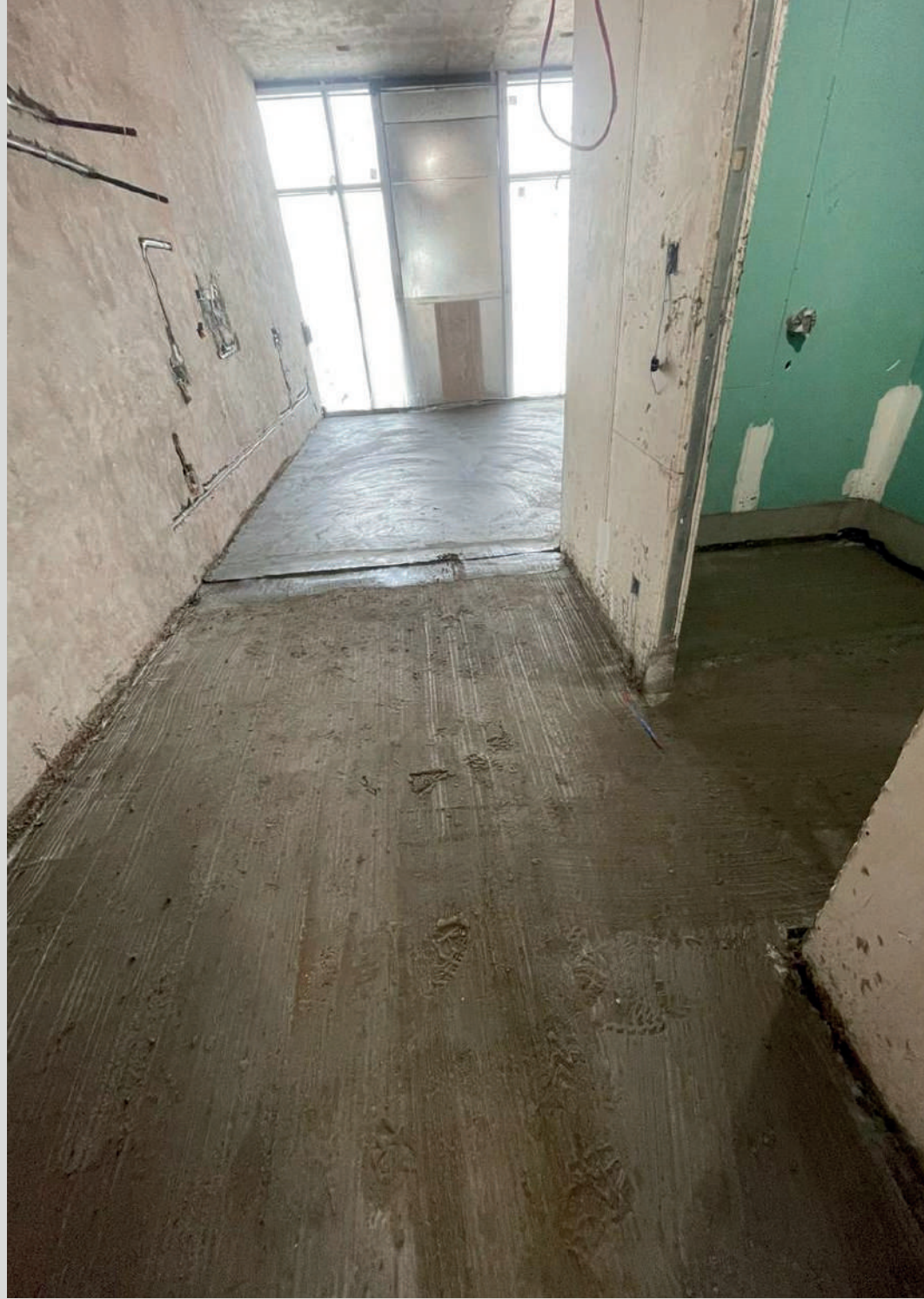
PROJECT MANAGEWR	ENG. JALAL ABDULAZIZ
PROJECT ENINEER	ENG. ALI MOHAMMED
SUPERVISOR	DILDAR REHMAN
SUPERVISOR	SHOAB REHMAN
GYPSTUM BOARD	F. AZHAR (32 CARPENTER)
PAINTING	F. MEDHAT (26 PAINTERS)
TILES	F. ABDULLAH (38 MASONS)
SCREED	F. RASHID (18 MASONS)
LOGISTIG AND CLEANING	F. HAROON (12 LABORS)









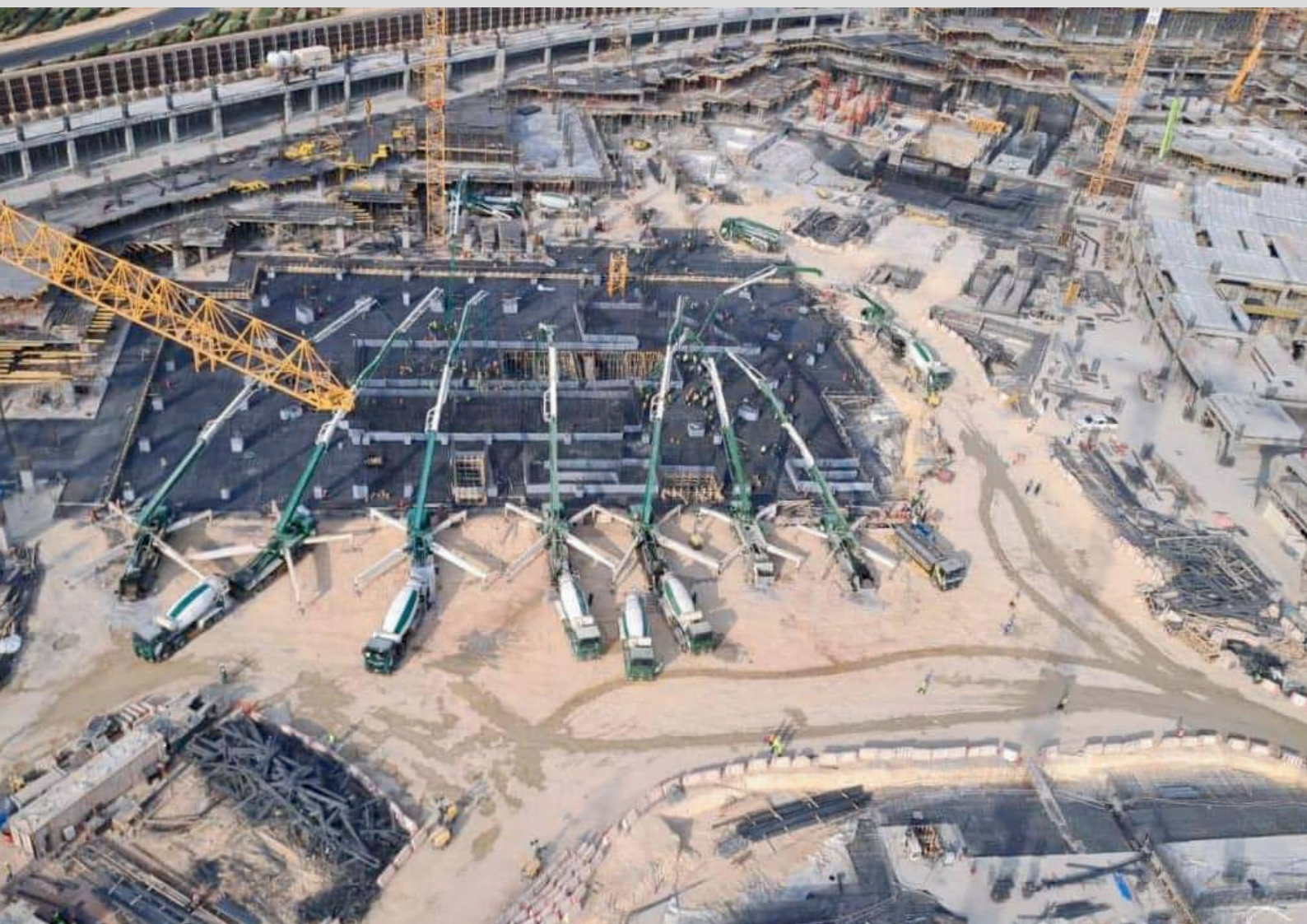


RIYADH AVENUES MALL

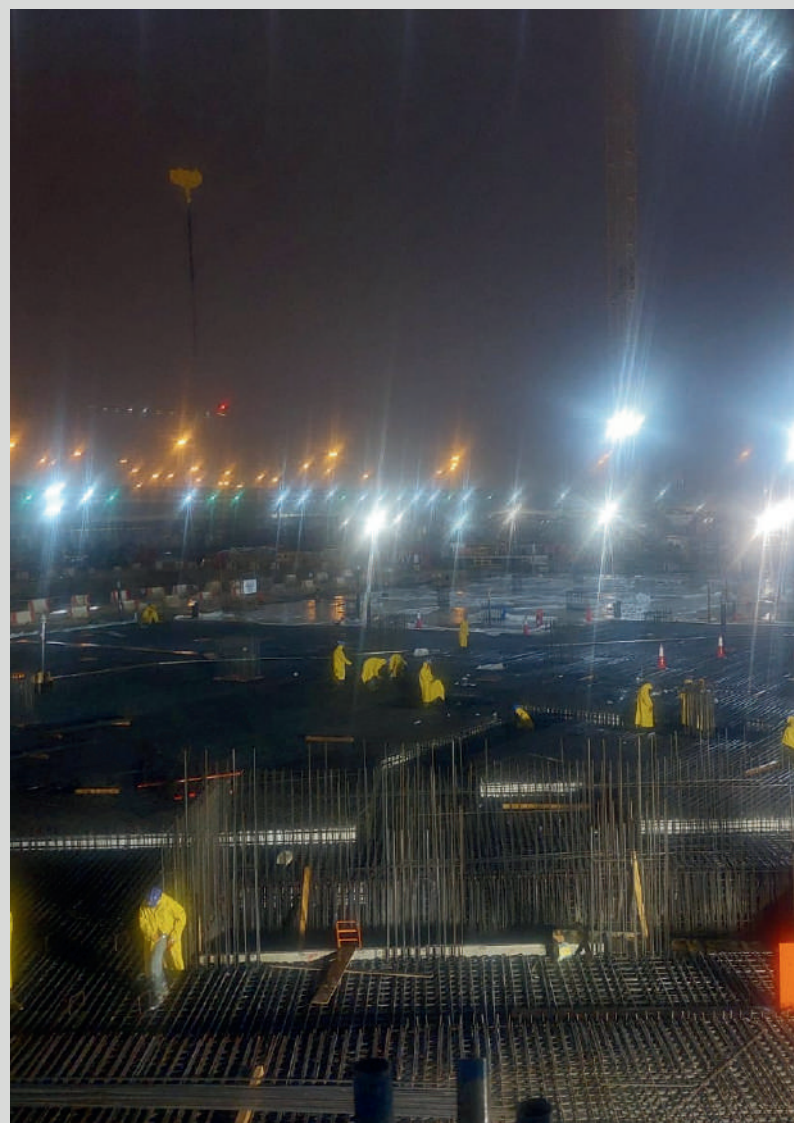
PROJET NAME	RIYADH AVENUES MALL
THE OWNER	SHOMOOL
MAIN CONTRACTOR	NESMA
WE WORKED AS	WORKMANSHIP FOR CONCRETE SKELTON IN JOINT-VENTURE WITH ALMAWANE FAST
CONTRACT VALUE	30,000,000 SAR
PROJECT DURATION	18 MONTHS FROM JUNE 22 TO DEC 23
PROJECT DESCRIPTION	MASSIVE MULTI-PURPOSE MALL (LAND AREA 135,000M2)

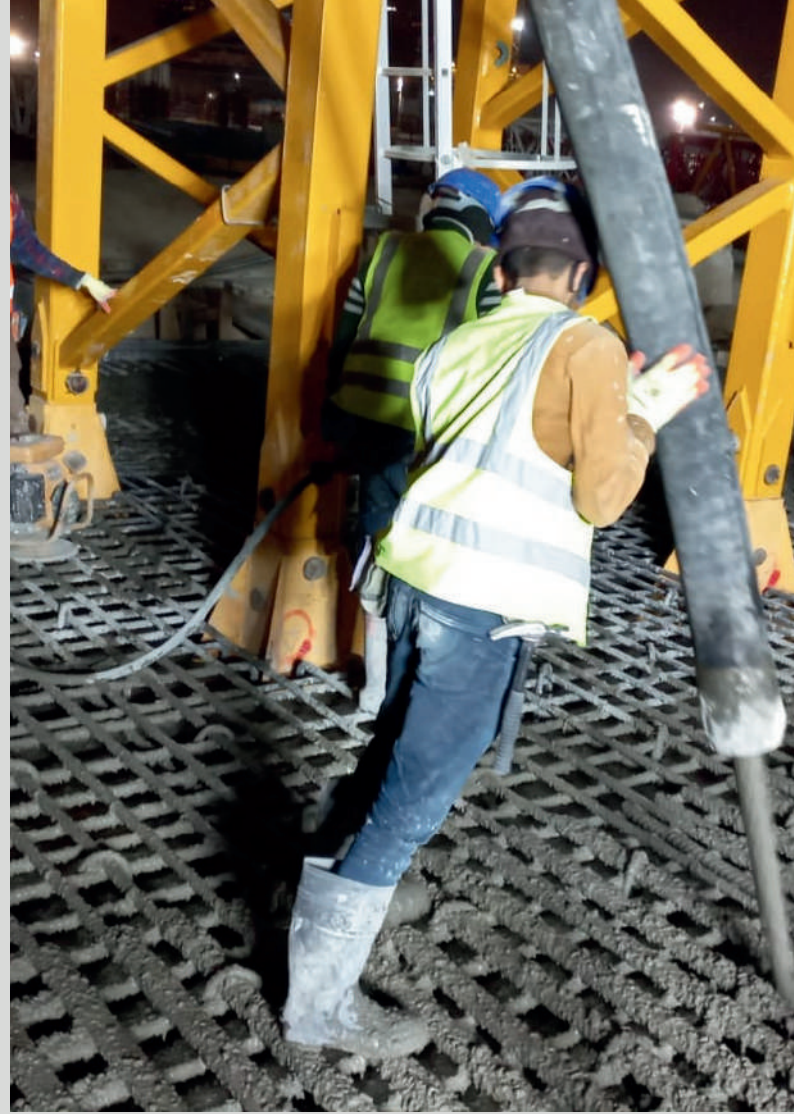
ORGANIZATION CHART

PROJECT COORDINATOR	MR. JOHN JOSEF (M FAST)
PROJOECT MANAGER	ENG. JALAL ABULAZIZ
COST CONTROL	ENG. MOHAMMED OBIED (M FAST)
RESIDENT ENGINEER	ENG. WAEL RASHID (M FAST)
PROJECT ENINEER	ENG. AHMED JAMAL
NIGHT SHIFT	ENG. ALI MOHAMMED
SUPERVISOR	DILDAR REHMAN
SURVEYER	ENG. HOSSAM (M FAST)
SAFETY	6 SAFETY OFFICERS
STEEL DAY	F. ZAID (82 STEEL FIXERS)
FORMWORK DAY	F. SAJID (1210CARPENTERS)
CONCRETE , BLOCK ,REPAIR AND LOGISTIC	F. AZZAM (80 MASONS AND 28 LABORS)
STEEL NIGHT	F. HAROON (110 STEEL FIXERS)
FORMWORK NIGHT	F. SADIQ (70 CARPENTERS)















OUR HISTORY

**ALSAAD GENERAL CONTRATING
FROM 2017 ENG HAZEM 0543992555**



RIYADH METRO 1C1



RIYADH METRO 1C2



DELTA - JEDDAH



DELTA - JEDDAH



ZAID ALHUSSAIN 2021

KING ABDULAH INTERNATIONAL PARK

ENG MOATAZ 0564434595





FREYSSINET 2016

RIYADH METRO - FAST

ENG . MOSTAFA 0549043227

METRO-DEPOT FAST 2016





ALMUHADIB 2013

JEDDAH STRATEGIC RESOLVING TANKS

ENG. AHMED 0580227114



ALFOUZAN 2013-2015

ENG. ASHRAF 0580357070



JEDDAH HOSPITAL

EWAA MEKKAH



DAR ALHEJRA MADINAH

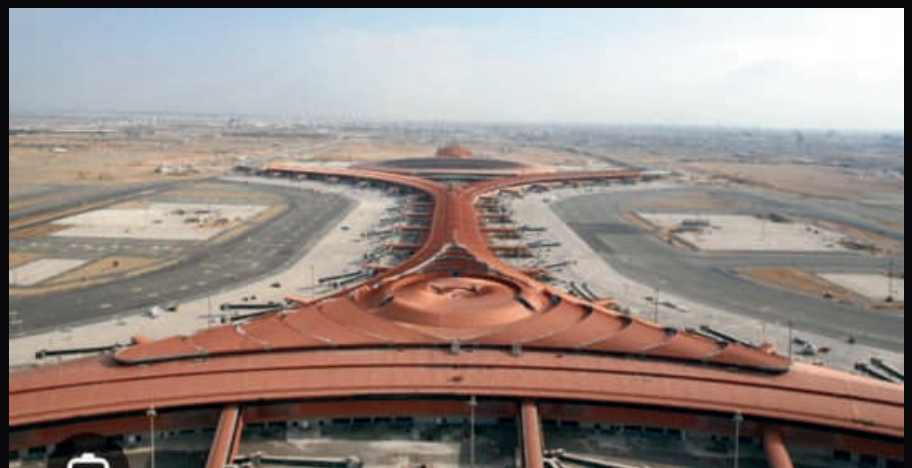
DAR ALHEJRA MADINAH



SAUDI BINLADIN GROUP 2013

KING ABDUAZIZ AIRPORT - JEDDAH

ENG. FAHAD 0504310902





PRACTICAL FACTS



ACHIEVEMENT

WE SUCCEEDED TO DELIVER
OUR PREVIOUS PROJECTS IN
LESS THAN THE SCHEDULED
TIME

250 EMPLOYEES

OUR COMPLETED PROJECTS
HELPED US IN IMPROVING
TEAM PROFESSIONALISM

CUSTOMERS SATISFACTION

WE SUCCEEDED TO
BUILD STRONG
RELATIONS WITH OUR
CUSTOMER



GOALS



LIST



GOAL 01

INHANSE OUR REPUTATION IN CONSTRUCTION DOMAIN THROW KSA

GOAL 02

INCRASE SAS ASSESTS AND TEAM PROFESSIONALISM.

GOAL 03

CREATE A NEW DESIGN DEPARTMENT SPECIALIZED IN SUSTAINABLE ARCHITECURE

CONTACT US



PHONE

ENG. JALAL ABDULAZIZ
0569088410

EMAIL

info@sasc.sa

WEBSITE

www.sasc.sa

ADDRESS

1RKQB4898 TUWIAIQ - RIYADH

THANK YOU!

